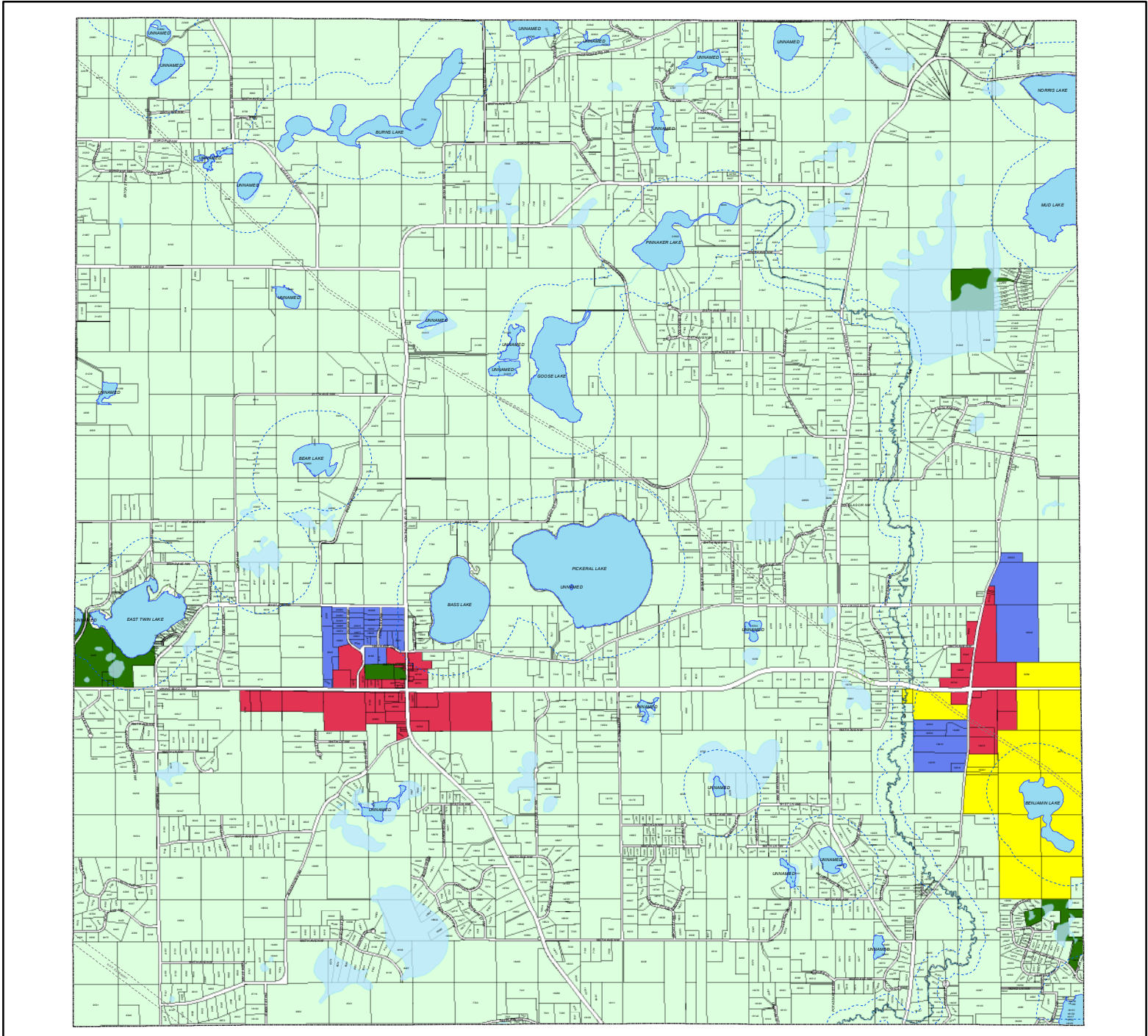


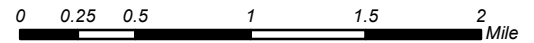
NOTICE: City files must be consulted to verify the zoning classification of property in addition to this map.

City of Nowthen Zoning Map



ZONING (PROPOSED)

- C-1 - Commercial District (371 acres / 1.76%)
- I-1 - Industrial District (251 acres / 1.19%)
- CON - Conservancy District (156 acres / 0.74%)
- RRA - Rural Residential Agriculture (19,861 acres / 94.03%)
- ROS - Residential Open Space (484 acres / 2.30%)
- Shoreland Overlay District



Sources: City of Nowthen, Anoka County, MN DNR, HAA & TPC

Ordinance #38, adopted October 13, 2011
Revised Shoreland Overlay District February 19, 2014

